

**CCAUV.A- K1**

**Comparison of laboratory standard microphone calibrations  
1999 - 2001**

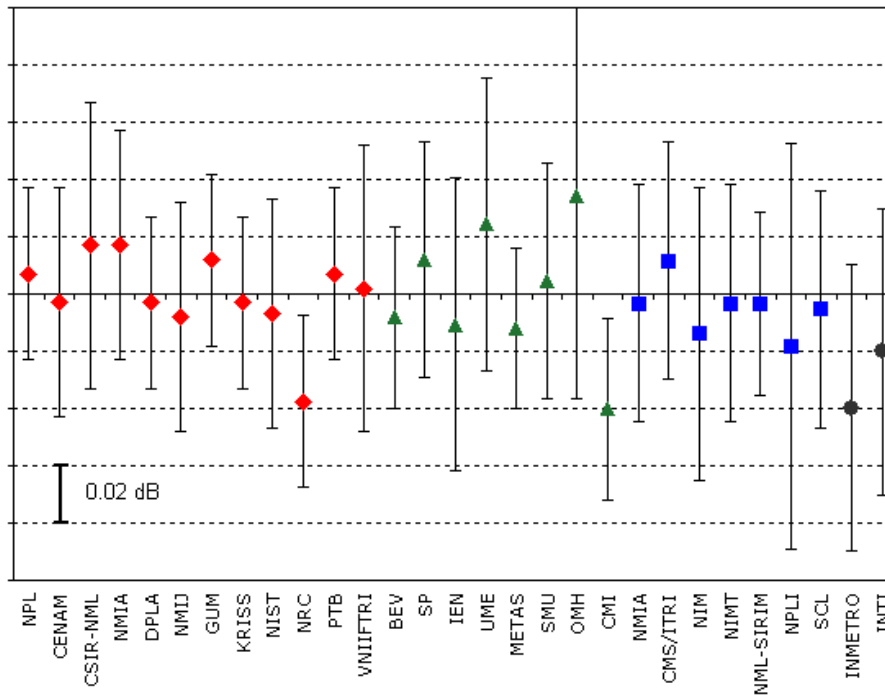
Graph(s)  
of equivalence

**CCAUV.A-K1, EUROMET.AUV.A-K1, APMP.AUV.A-K1,  
and SIM.AUV.A-K1**

**MEASURAND : Pressure sensitivity level of LS1P laboratory standard microphones  
NOMINAL VALUE : 0 dB**

**FREQUENCY : 250 Hz**

**Degrees of equivalence  $D_i$  and expanded uncertainty  $U_i$  ( $k = 2$ ) expressed in dB**  
The horizontal continuous red line crosses the y-axis at the value 0 dB



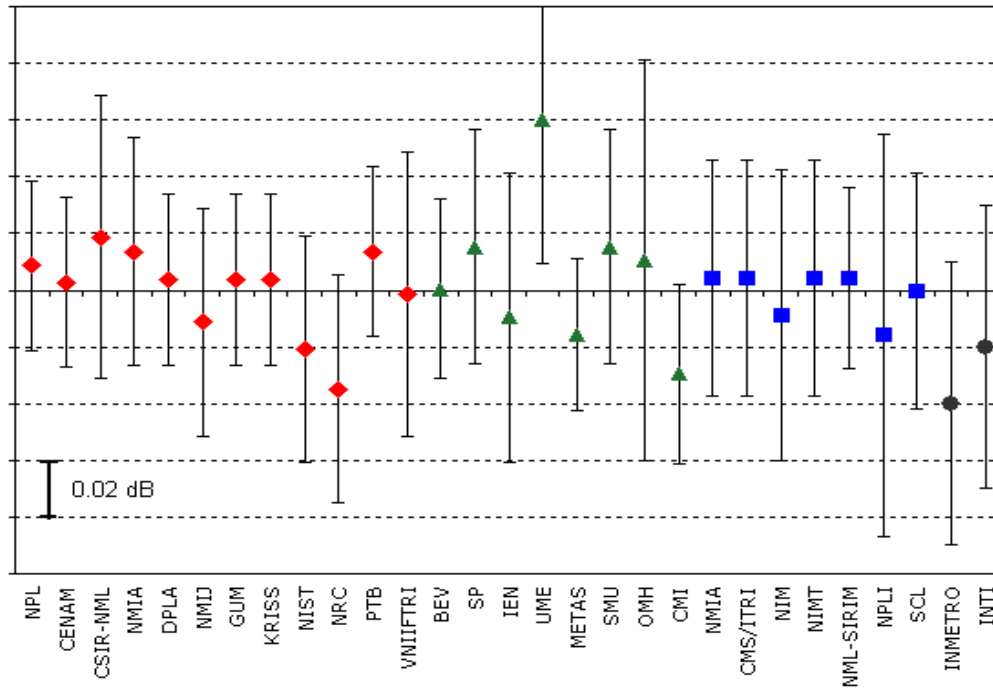
- Red diamonds** : CCAUV.A-K1 participants
- Green triangles** : EUROMET.AUV.A-K1 participants only
- Blue squares** : APMP.AUV.A-K1 participants only
- Black circles** : SIM.AUV.A-K1 participants only

**CCAUV.A-K1, EUROMET.AUV.A-K1, APMP.AUV.A-K1,  
and SIM.AUV.A-K1**

**MEASURAND** : Pressure sensitivity level of LS1P laboratory standard microphones  
**NOMINAL VALUE** : 0 dB

**FREQUENCY** : 1000 Hz

**Degrees of equivalence  $D_i$  and expanded uncertainty  $U_i$  ( $k = 2$ ) expressed in dB**  
 The hor



continuous line crosses the y-axis at the value 0 Db

izontal

- Red diamonds** : CCAUV.A-K1 participants
- Green triangles** : EUROMET.AUV.A-K1 participants only
- Blue squares** : APMP.AUV.A-K1 participants only
- Black circles** : SIM.AUV.A-K1 participants only